



48" CrudeSep®

technical specifications

Equipment Weights & Dimensions

Structure Weight	11,350 kg
Operating Weight	15,100 kg
Unit Length	3,000 mm
Unit Width	2,800 mm
Unit Height	5,500 mm
Footprint Area	8.4 m ²
Deck Loading	1800 kg/m ²

Operating Flow Capacity

Maximum Flow Rate 40,000 (bbls/day)

Pressure & Temperatures

Design Pressure 16 Barg (Vessel PED
Cat 4, piping cat 2)

Design Temperature -10°C - 100°C

Electrical

Zone Rating Zone 2

Approval ATEX II 3G IIB T4

Utilities Required

HMI Panel (PLC) 1 x 93-240 VAC
1 phase-Max 10 amps

Air Supply 100 psi Min (must
be clean and dry)



WATER TREATMENT

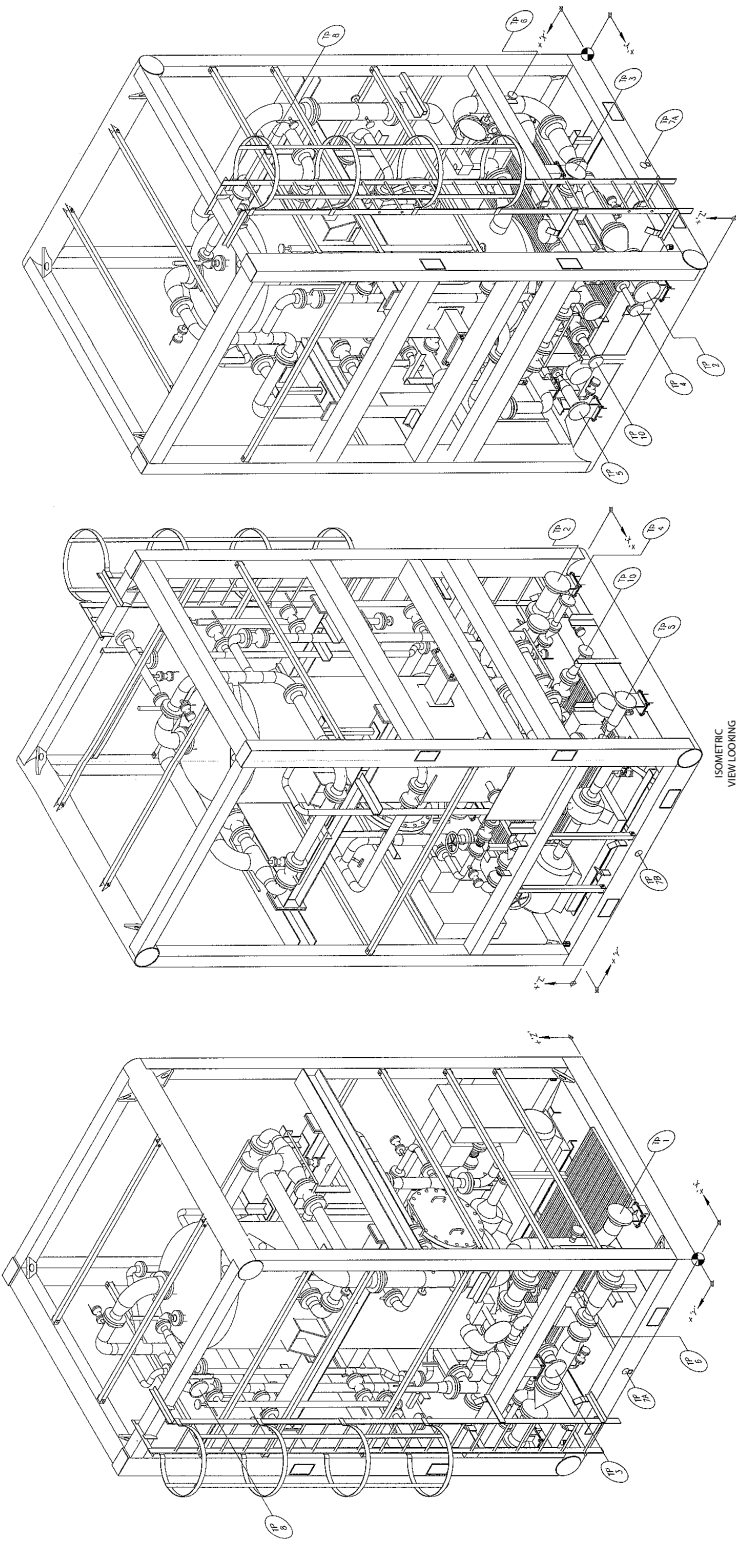


CETCO
OILFIELD
SERVICES
COMPANY

UK
Malaysia
Middle East
Africa
Australia

+44(0)1224 787340
+603 216 206 95
+968 245 80219
+44(0)791 783 8316
+61(0) 893 160122

www.cetcooilfieldservices.com



ISOMETRIC VIEW LOOKING SOUTH EAST

ISOMETRIC VIEW LOOKING SOUTH WEST

ISOMETRIC VIEW LOOKING NORTH EAST

NO.	DESCRIPTION	QTY	UNIT	WEIGHT (LBS)	WEIGHT (KG)	TERMINATION	POINT DATA	TABLE
10	VESSEL DRUM (N2)	1	DRUM	1155	523	2" NPT FEMALE THREAD		
9	INSTRUMENT AIR SUPPLY	1	VALVE	1457	662	2" NPT FEMALE THREAD		
8	RELIEF VALVE DISCHARGE (N2)	47	VALVE	1840	834	2" NPT 150# RF FLANGE		
7	DISCHARGE (N2)	20	VALVE	1469	666	2" NPT FEMALE THREAD		
6	OPERATIONAL INJECTION POINT (N2A/B)	81	VALVE	1150	522	3/4" NPT 150# RF FLANGE		
5	GAS OUTLET	2025	PIPE	2834	1285	4" NPT 150# RF FLANGE		
4	PRODUCED WATER OUTLET (N2)	380	PIPE	2833	1285	4" NPT 150# RF FLANGE		
3	PRODUCED WATER INLET (N2A/B)	172	PIPE	247	112	2" NPT 150# RF FLANGE		
2	PRODUCED WATER INLET (N2A/B)	42	PIPE	247	112	2" NPT 150# RF FLANGE		
1	TERMINATION POINT DATA TABLE							

CONDITION	WEIGHT (LBS)	WEIGHT (KG)	NO.	UNIT
DRY (EST)	1350	612	1515	2326
OPERATING	1350	612	1515	2326
TEST	1350	612	1515	2326
LOAD TEST	1350	612	1515	2326
SWL	1350	612	1515	2326
PACKET	1350	612	1515	2326

REV	DATE	BY	CHK	APP	DESCRIPTION
1	01/11/22	A	001	4	C
2					
3					
4					
5					

REV	DATE	BY	CHK	APP	DESCRIPTION
1	01/11/22	A	001	4	C
2					
3					
4					
5					

DRAWING NO. 6320 A 001
 SHEET NO. 4 OF 4
 PROJECT NO. PO24U109
 DATE: 01/11/22
 DRAWN BY: J. J. WARD
 CHECKED BY: J. J. WARD
 APPROVED BY: J. J. WARD
 SCALE: AS SHOWN
 COMPANY: CETCO OILFIELD SERVICES COMPANY
 PRODUCT: CRUSEP CSP-4000-R SEPARATOR V-10
 GENERAL ARRANGEMENT

