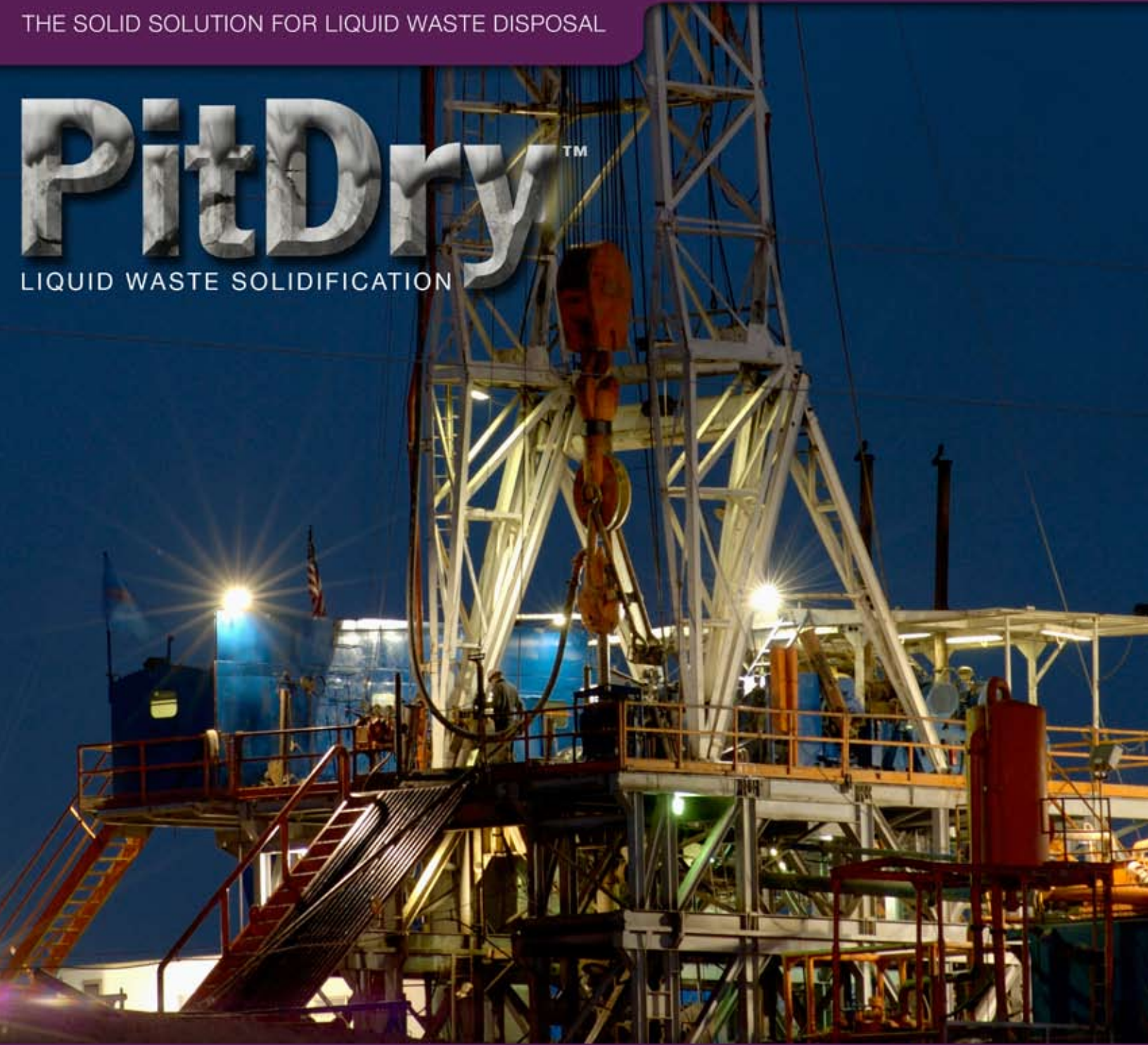


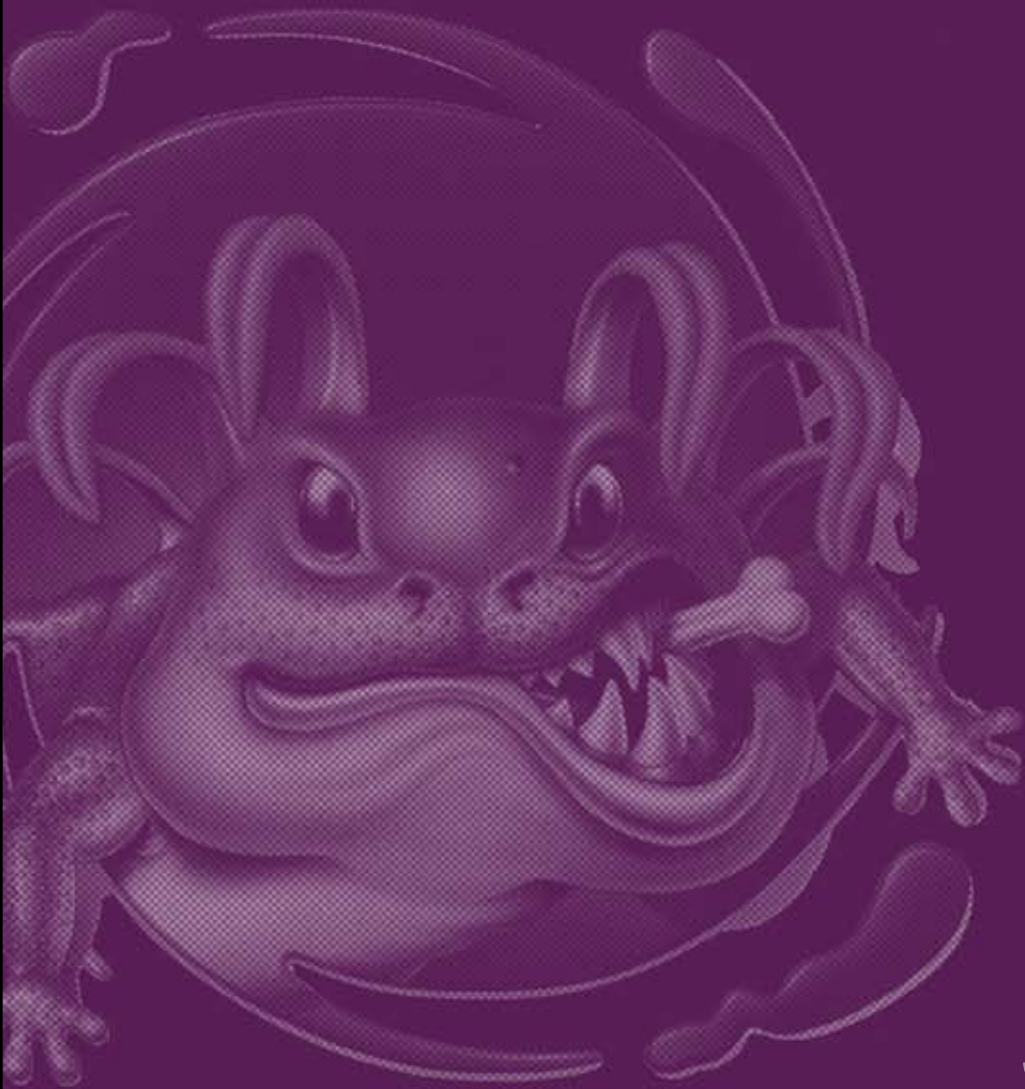
THE SOLID SOLUTION FOR LIQUID WASTE DISPOSAL

# PitDry™

LIQUID WASTE SOLIDIFICATION



**CETCO**  
**OILFIELD**  
**SERVICES**  
**COMPANY**



PROBLEM >

SOLUTION >

**Spent drilling mud can be a costly problem.** By the time you recover it, tanker it off-site, make certain it meets all environmental regulatory requirements and pay tipping fees to dispose of it, it can be a very expensive and time-consuming problem.



That's why GETCO Oilfield Services developed the PitDry™ process.

**This revolutionary new application is the only one on the market** that converts spent drilling fluids into disposable, dumpable solids in minutes. With this unique process, available only from GETCO Oilfield Services, you simply pump spent fluid through one of our patented mixers, the PDM-300 or the PDA-300, while adding our PitDry reagent.

PitDry is a powdered, inorganic mineral formula used for the solidification and stabilization of drill fluids. PitDry chemically fixates heavy metal bearing wastes, stabilizes hydrocarbons and other organic and inorganic material while minimizing total solids volume by as much as 20%.

More efficient material handling translates to the elimination of liquid spill liability and the inherent cost of dealing with variable liquid streams.





## Benefits



- Economical disposal solution
- Proven results – ensures compliance
- Simple one-step process – sets up in 24-72 hours
- Converts liquid to solid in minutes
- Flexible – manually operated units and fully automatic mixing systems are available
- Mobile – small foot plan unit, stationary or portable
- Operates on a wide range of pH
- Low exothermic reaction during treatment
- High adsorption capability promotes encapsulation for heavy metals and organic contaminants (both Micro and Macro Encapsulation)
- Treats solids to pass all the following tests:
  - o Paint Filter Liquids Test – EPA Test Method 9095
  - o Slump Test – CSA Test Method A23.25C
  - o Liquid Release Test (LRT) Procedure – EPA Test Method 9096
  - o Toxicity Characteristic Leaching Procedure – EPA Test Method 1311
  - o Leachable BTEX (benzene, toluene, ethyl benzene, and xylenes)
- Solids meet Class II Landfill Criteria

*liquid to solid in minutes*

# 1 STEP PROCESS



Simply pump spent fluid through a PDM-300 machine while adding PitDry reagent.

**That's it.** When you're through, you have a solid product that passes Resource Conservation and Recovery Act (RCRA) paint filter and slump tests and can be taken directly to a landfill – or simply mixed into the soil at the project site.

What you don't have are long-term environmental liabilities, costly and complex disposal methods, or high costs for remediation in increasingly stringent regulatory environments.



## Encapsulate Heavy Metal

CETCO Oilfield Services has been involved in developing products to aid in the treatment of heavy metal contaminated soil and sludge for over 20 years. Several lines of reagents have been developed to address industry needs for economical material handling and compliance. The new PitDry process is an extension of these proven technologies.

### Example Test Site Test Results – Heavy Metal Reduction

Parameter	Unit	Raw Untreated	Treated	RDL	% Reduction
Aluminum	mg/l	1.85	1.14	0.1	29%
Barium	mg/l	0.74	0.54	0.02	3%
Copper	mg/l	0.06	0.02	0.02	66%
Iron	mg/l	1.61	1.42	0.02	22%
Nickel	mg/l	0.14	0.06	0.05	68%

This process is able to reduce heavy metal leaching from contaminated drilling fluid as well as tie up hydrocarbon contaminants and other organic and inorganic constituents.

### Example Test Site Test Results - BTEX Reduction

Parameter	Unit	Before	After	% Reduction
Benzene	ug/l	58.8	n/d	100%
Toluene	ug/l	83.1	n/d	100%
Ethyl benzene	ug/l	n/d	n/d	n/a
Xylenes	ug/l	18.1	5.12	72%

**PitDry™ is easy, affordable, and effective.**

In short, it's everything you'd like in a waste disposal solution.



That's one expensive problem solved.

WATER TREATMENT | PIPELINE | WELL TESTING | WASTEWATER | RENTALS | NITROGEN | REELED TUBING



**CETCO**  
**OILFIELD**  
**SERVICES**  
**COMPANY**

Industrial Wastewater Services 800.527.9948  
Houston, Texas 281.578.8911  
Red Deer, Alberta 403.597.5281

[www.cetcooilfieldservices.com](http://www.cetcooilfieldservices.com)



**CETCO**  
**OILFIELD**  
**SERVICES**  
**COMPANY**

© 2007 CETCO Oilfield Services Company

PitDry™ is a registered trademark of Surface to Surface, Inc. The information and data contained herein are believed to be accurate and reliable. CETCO Oilfield Services Company makes no warranty of any kind and accepts no responsibility for the results obtained through application of this information. CETCO Oilfield Services Company is a wholly-owned subsidiary of AMCOL International Corporation.