



15k Line Heater

technical specifications

Equipment Weights & Dimensions

Dry Weight	29,800 lbs
Operating Weight	49,500 lbs
Skid Length	24'
Skid Width	8'
Skid Height	11'
Vessel size	60" O.D. x 15'

Equipment Specifications

Capacity	2 MBTU/hr
Number of Passes	10 Upstream / 8 Downstream
Valves: Inlet, Outlet, By-Pass	3" Cortec 15K Ball Valve
Choke Details	2 1/6" Body with 2" Seat
Max Operating Pressure	15,000 psi
Inlet and Outlet Flange	15,000 psi 2 1/16"
Coded Vessel	ASME B31.3, NACE MR0175
API 14C Compliant	Flame Arrested Burner, Stack Arrestor, Bath High Temperature Sensor, Stack High Temperature Sensor, Burner Safety Low



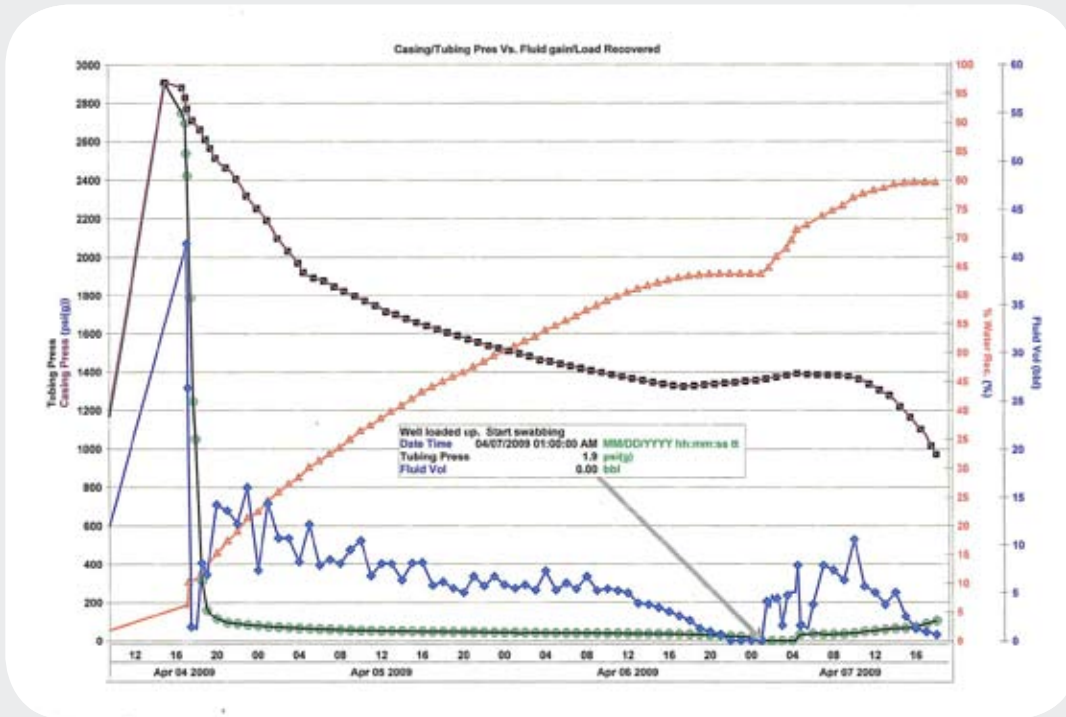
WATER TREATMENT | PIPELINE WELL TESTING | WASTEWATER | NITROGEN | COILED TUBING



CETCO
OILFIELD
SERVICES

Covington, Louisiana	985.871.4700
Broussard, Louisiana	800.432.0054
Houston, Texas	281.578.8911
Beckville, Texas	903.678.9747
Springtown, Texas	817.523.5333

cetcooilfieldservices.com



Data Collection & Reporting

Once the data is collected, utilizing F.A.S.T. FieldNotes™ you can view plots, tables, and reports; calculate gas and oil rates; monitor gas and load fluid rates; transfer data to pressure transient analysis software; and print reports. F.A.S.T. Field Notes incorporates the latest technology, is easy to use, and provides practical and advanced solutions for reservoir engineering and production optimization projects.

Key Features

- **Test Data Results** - view test results at a glance with superb graphical presentation and detailed tabular outputs. Monitor key locations for possible hydrating conditions.
- **Gas and Fluid Meter Calculations** - gas rates are calculated using AGA 3, AGA 7 and AGA 8 specifications. Oil rate calculations use ASTM 1250D, AGA 7 and different oil correlations such as Standing and Vasquez & Beggs to determine GOR2 and liberated gas.
- **Test Data Transfer** - transfer production test data to pressure transient analysis software
- **Manual or Real Time Data Gathering** - electronically gather production test data in “real time” from the wellhead, test equipment & downhole gauges using the ModBus Protocol. Alarm on critical maximum or minimum conditions.
- **Monitor Recovered Fluids** - monitor the percent of load fluid (oil, water, mixed) recovered.

WATER TREATMENT | PIPELINE WELL TESTING WASTEWATER | NITROGEN | COILED TUBING



CETCO
OILFIELD
SERVICES

Covington, Louisiana 985.871.4700
Broussard, Louisiana 800.432.0054
Houston, Texas 281.578.8911
Beckville, Texas 903.678.9747
Springtown, Texas 817.523.5333

cetcooilfieldservices.com