



SMART Data Package Surface Measurement Acquisition (in) Real Time

technical specifications

Technology so advanced that instrumenting your well test operation is incredibly simple.

CETCO's Well Testing Data Acquisition Package, known as the SMART (Surface Measurement Acquisition in Real Time) Data Package, includes all the hardware and software necessary to monitor and record any well testing job.

Process

Data from the wireless sensors and from other existing devices is sent to the base radio station which is then transmitted to a local computer for viewing and recording using the most advanced and accepted data reporting software available. Files from this system can then be transmitted to your desktop.



Rugged Data Acquisition

Our SMART Data Package is a monitoring solution designed for harsh oil and gas environments. We provide an extensive array of field units that can even extend or coexist with your current operation. The wireless field units combine a sensor, rf transmitter and a long life battery, all packaged together and rated for hazardous area use.

Minimum Configuration

- Wireless Base Station – communication with remote sensors; historical collection; test data backup and redundancy; programmable, variable rate data collection; gas flow calculation; multi-variate computation; interface to downhole pressure and temperature gauge
- Real-Time Collection and Reporting software - data collection (real-time), gas calculations
- Wireless Pressure Sensors - wellhead pressure, casing pressure, static pressure (gas), separator pressure
- Wireless Temperature Sensors (RTD) - wellhead, static gas, separator monitoring
- Wireless Turbine Flow - oil, water, gas from production
- Differential Pressure - orifice plate gas measurement

Advantages

- **Wireless Mobility** – easy to transfer from site to site.
- **Dependable** – field proven state-of-the-art technology.
- **Specific** – sensors fit your needs and are approved for regulatory reports.
- **Accurate** – the right numbers the first time.

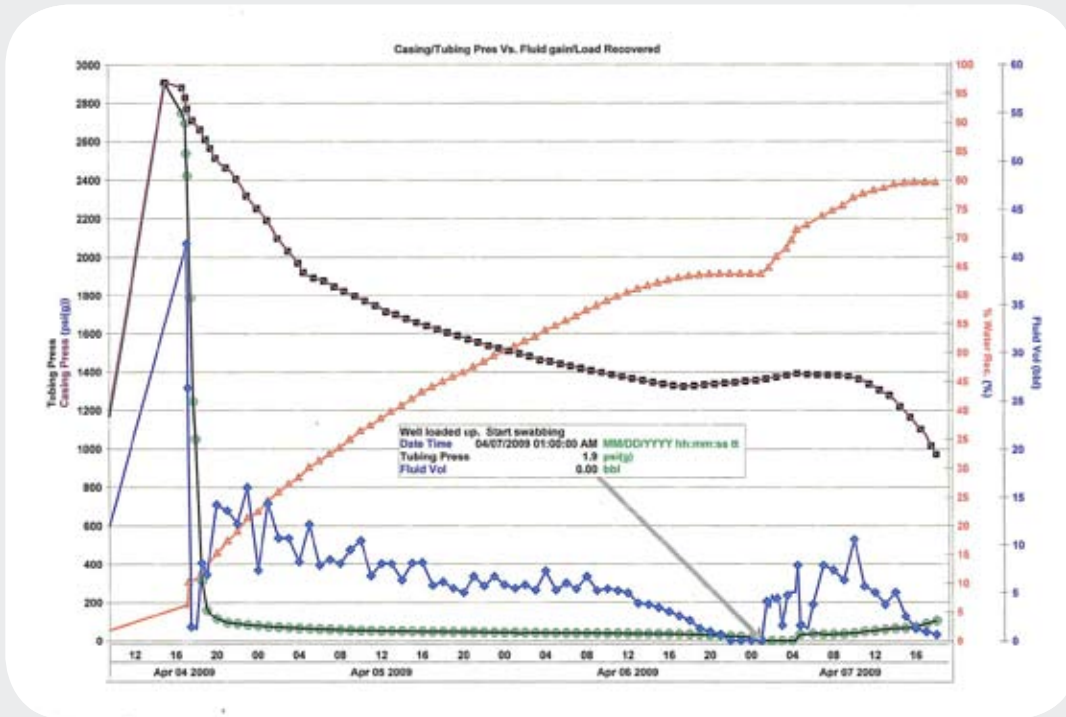
WATER TREATMENT | PIPELINE WELL TESTING WASTEWATER | RENTALS | NITROGEN | COILED TUBING



CETCO
OILFIELD
SERVICES

Covington, Louisiana	985.871.4700
Broussard, Louisiana	800.432.0054
Houston, Texas	281.578.8911
Beckville, Texas	903.678.9747
Springtown, Texas	817.523.5333

cetcooilfieldservices.com



Data Collection & Reporting

Once the data is collected, utilizing F.A.S.T. FieldNotes™ you can view plots, tables, and reports; calculate gas and oil rates; monitor gas and load fluid rates; transfer data to pressure transient analysis software; and print reports. F.A.S.T. Field Notes incorporates the latest technology, is easy to use, and provides practical and advanced solutions for reservoir engineering and production optimization projects.

Key Features

- **Test Data Results** - view test results at a glance with superb graphical presentation and detailed tabular outputs. Monitor key locations for possible hydrating conditions.
- **Gas and Fluid Meter Calculations** - gas rates are calculated using AGA 3, AGA 7 and AGA 8 specifications. Oil rate calculations use ASTM 1250D, AGA 7 and different oil correlations such as Standing and Vasquez & Beggs to determine GOR2 and liberated gas.
- **Test Data Transfer** - transfer production test data to pressure transient analysis software
- **Manual or Real Time Data Gathering** - electronically gather production test data in “real time” from the wellhead, test equipment & downhole gauges using the ModBus Protocol. Alarm on critical maximum or minimum conditions.
- **Monitor Recovered Fluids** - monitor the percent of load fluid (oil, water, mixed) recovered.

WATER TREATMENT | PIPELINE WELL TESTING WASTEWATER | RENTALS | NITROGEN | COILED TUBING



CETCO
OILFIELD
SERVICES

Covington, Louisiana 985.871.4700
Broussard, Louisiana 800.432.0054
Houston, Texas 281.578.8911
Beckville, Texas 903.678.9747
Springtown, Texas 817.523.5333

cetcooilfieldservices.com